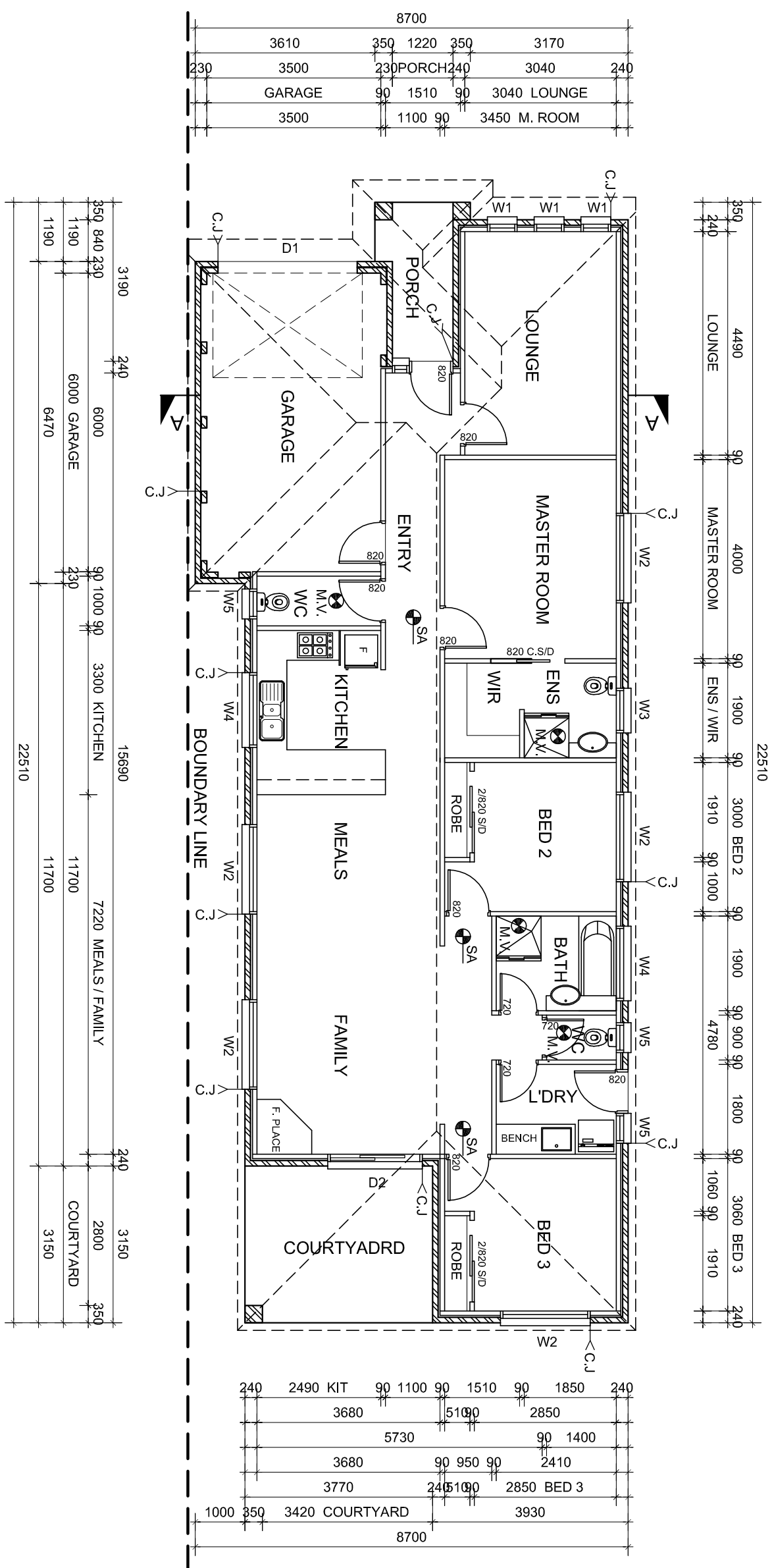


**NOTE:**  
DWELLING IS A 5 STAR ENERGY RATING COMPLIANCE REFER TO ENERGY RATING REPORT.

**NOTE:**  
ALL EXTERNAL EQUIPMENT AND FIXTURES TO BE SCREENED FROM PUBLIC VIEW



WINDOW & DOOR SCHEDULE	
W-1	600W X 1800H ALUMINIUM FRAMED AWNING WINDOW
W-2	1800W X 1200H ALUMINIUM FRAMED SLIDING WINDOW
W-3	900W X 900H ALUMINIUM FRAMED SLIDING WINDOW (OBSCURE GLASS)
W-4	1500W X 900H ALUMINIUM FRAMED SLIDING WINDOW (OBSCURE GLASS)
W-5	600W X 900H ALUMINIUM FRAMED AWNING WINDOW (OBSCURE GLASS)
D-1	2800W x 2100H GARAGE PANEL LIFT DOOR (as selected)
D-2	1900W x 2100H ALUMINIUM FRAMED SLIDING DOOR

**NOTES:**

- WINDOW SCHEDULE TO BE READ IN CONJUNCTION WITH ELEVATIONS & ENERGY RATING REPORT.
- ALL WINDOWS HEAD HEIGHT TO BE 2100mm ABOVE F.F.L UNLESS OTHERWISE NOTED.
- ALL GLAZING SHALL BE CARRIED OUT IN ACCORDANCE WITH AS 1288 - 1994 GLASS INSTALLATION CODE & THE B.C.A.
- BUILDER TO CONFIRM WINDOW SIZES WITH WINDOW MANUFACTURER PRIOR TO ORDERING & INSTALLATION.
- WHERE BRICKWORK EXTENDS OVER OPENING PROVIDE WEEPHOLES AT 960mm MAX. CTRS. WITH CONTINUOUS FLASHING (TYPICAL).
- ALL LINTELS ARE TO BE INSTALLED IN ACC. WITH AS. 1684.

**NOTES:**

- BUILDER SHALL VERIFY ALL DIMENSIONS & LEVELS ON SITE PRIOR TO COMMENCEMENT OF ANY WORKS.
- THESE DRAWINGS ARE TO BE READ IN CONJUNCTION WITH ENGINEERING DRAWINGS FOR ALL LOCATION OF BEAMS, LINTELS & ETC.
- ALL DOWNPIPES ARE NOT SHOWN IN FLOOR PLAN. REFER TO SITE PLAN FOR LOCATIONS & DISCHARGE POINT.
- TOLTET DOORS TO COMPLY WITH B.C.A. 3.8.3.3 TO OPEN OUTWARDS. SLIDE OR BE REMOVABLE FROM THE OUTSIDE IF LESS THAN 1.2m. BETWEEN THE PAN & DOOR FRAME.

**LEGEND**

	ALL MECHANICAL VENTILATION TO BE 2000 MIN. FAN & TO EXTRACT 10 LV/SEC. MIN. DUCTED TO EXTERNAL AIR.
	SMOKE DETECTORS TO BE HARD WIRED TO THE ELECTRICAL MAIN SYSTEM
	BRICK CONTROL JOINTS AT 6.0m MAX CENTRES. ALL CONTROL JOINTS TO CONFORM WITH CNB OF THE CEMENT & CONCRETE ASSOCIATION

**GROUND FLOOR PLAN 1:100**