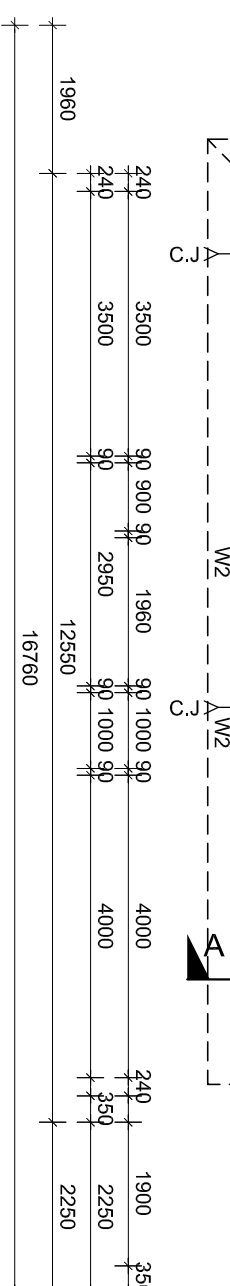
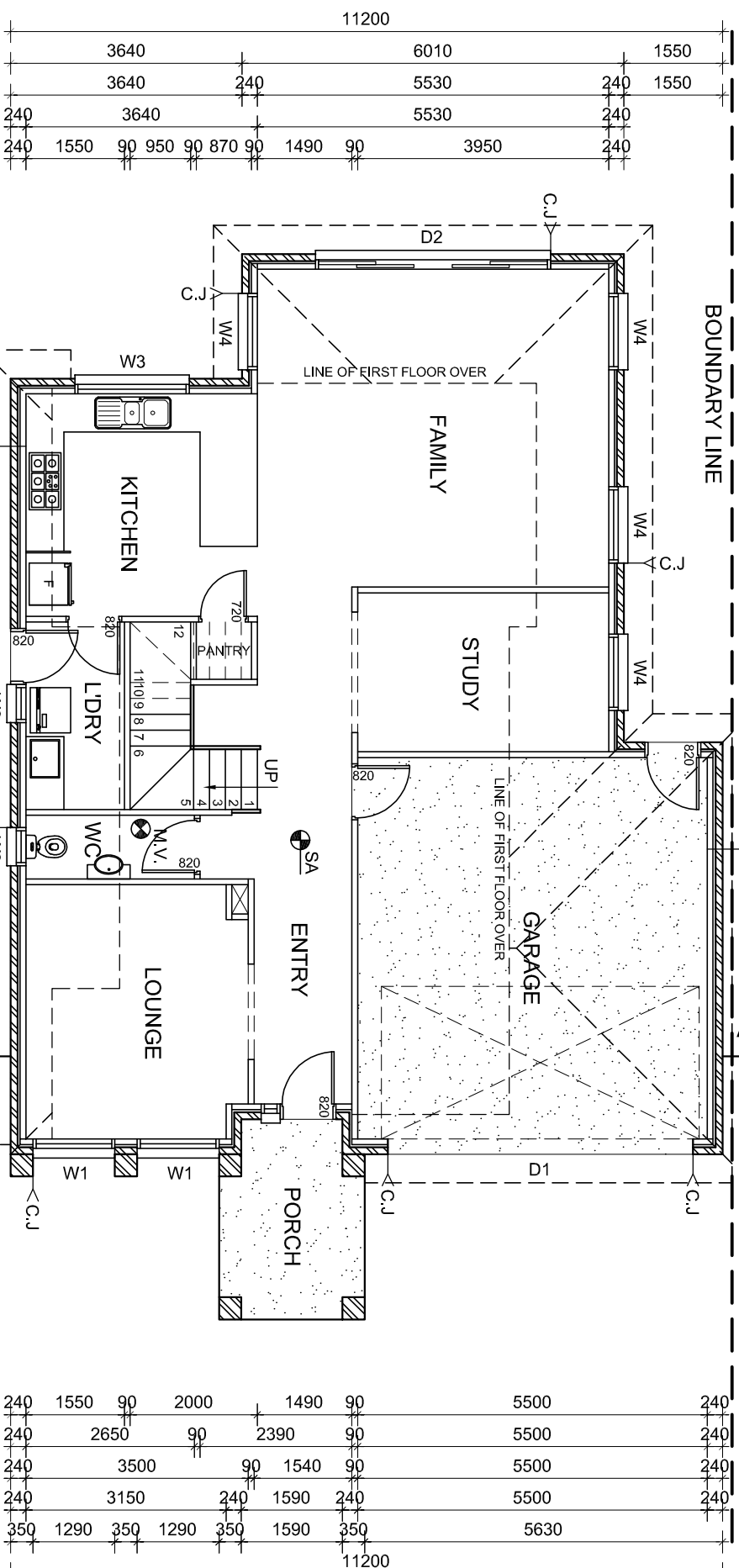
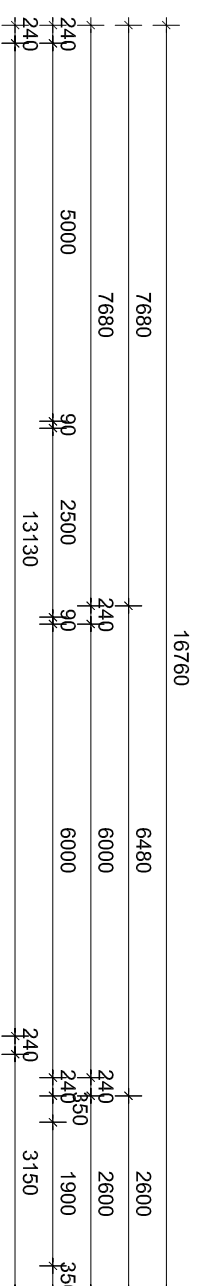


NOTE:
DWELLING IS A 5 STAR ENERGY RATING COMPLIANCE REFER TO ENERGY RATING REPORT.

NOTE:
ALL EXTERNAL EQUIPMENT AND FIXTURES TO BE SCREENED FROM PUBLIC VIEW



WINDOW & DOOR SCHEDULE

W1	1290X 1800H ALUMINIUM FRAMED AWNING WINDOW
W2	600W X 900H ALUMINIUM FRAMED AWNING WINDOW (OPACURE GLASS)
W3	1800W X 1200H ALUMINIUM FRAMED SLIDING WINDOW
W4	1200W X 1800H ALUMINIUM FRAMED SLIDING WINDOW
D1	4800W X 2400H GARAGE PANEL LIFT DOOR AS SELECTED
D2	3700W X 2100H ALUMINIUM FRAMED SLIDING DOOR

NOTES:

- WINDOW SCHEDULE TO BE READ IN CONJUNCTION WITH ELEVATIONS & ENERGY RATING REPORT. DO NOT SCALE WINDOWS REFER TO WINDOW & DOOR SCHEDULE.
- ALL WINDOWS HEAD HEIGHT TO BE 2100mm ABOVE F.F.L UNLESS OTHERWISE NOTED.
- ALL GLAZING SHALL BE CARRIED OUT IN ACCORDANCE WITH AS 1288 - 2006 GLASS INSTALLATION CODE & THE B.C.A.
- BUILDER TO CONFIRM WINDOW SIZES WITH WINDOW MANUF.C. PRIOR TO ORDERING & INSTALLATION.
- WHERE BRICKWORK EXTENDS OVER OPENING PROVIDE WEEPHOLES AT 960mm MAX. CTRS. WITH CONTINUOUS FLASHING (TYPICAL).
- ALL LINTELS ARE TO BE INSTALLED IN ACC. WITH AS. 1684.

NOTES:

- BUILDER SHALL VERIFY ALL DIMENSIONS & LEVELS ON SITE PRIOR TO COMMENCEMENT OF ANY WORKS.
- THESE DRAWINGS ARE TO BE READ IN CONJUNCTION WITH ENGINEERING DRAWINGS FOR ALL LOCATION OF BEAMS, LINTELS & ETC.
- ALL DOWNPIPES ARE NOT SHOWN IN FLOOR PLAN. REFER TO SITE PLAN FOR LOCATIONS & DISCHARGE POINT.
- TOILET DOORS TO COMPLY WITH B.C.A. 3.8.3.3 TO OPEN OUTWARDS. SLIDE OR BE REMOVABLE FROM THE OUTSIDE IF LESS THAN 1.2m. BETWEEN THE PAN & DOOR FRAME.

LEGEND

M.V.	ALL MECHANICAL VENTILATION TO BE 2000 MIN. FAN & TO EXTRACT 10 L/SEC. MIN. DUCTED TO EXTERNAL AIR.
SA	SMOKE DETECTORS TO BE HARD WIRED TO THE ELECTRICAL MAIN SYSTEM
C.J	BRICK CONTROL JOINTS AT 60mm MAX CENTRES. ALL CONTROL JOINTS TO CONFIRM WITH CN9 OF THE CEMENT & CONCRETE ASSOCIATION

GROUND FLOOR PLAN 1:100