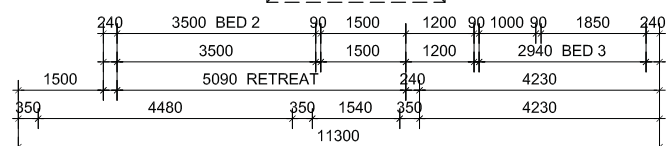
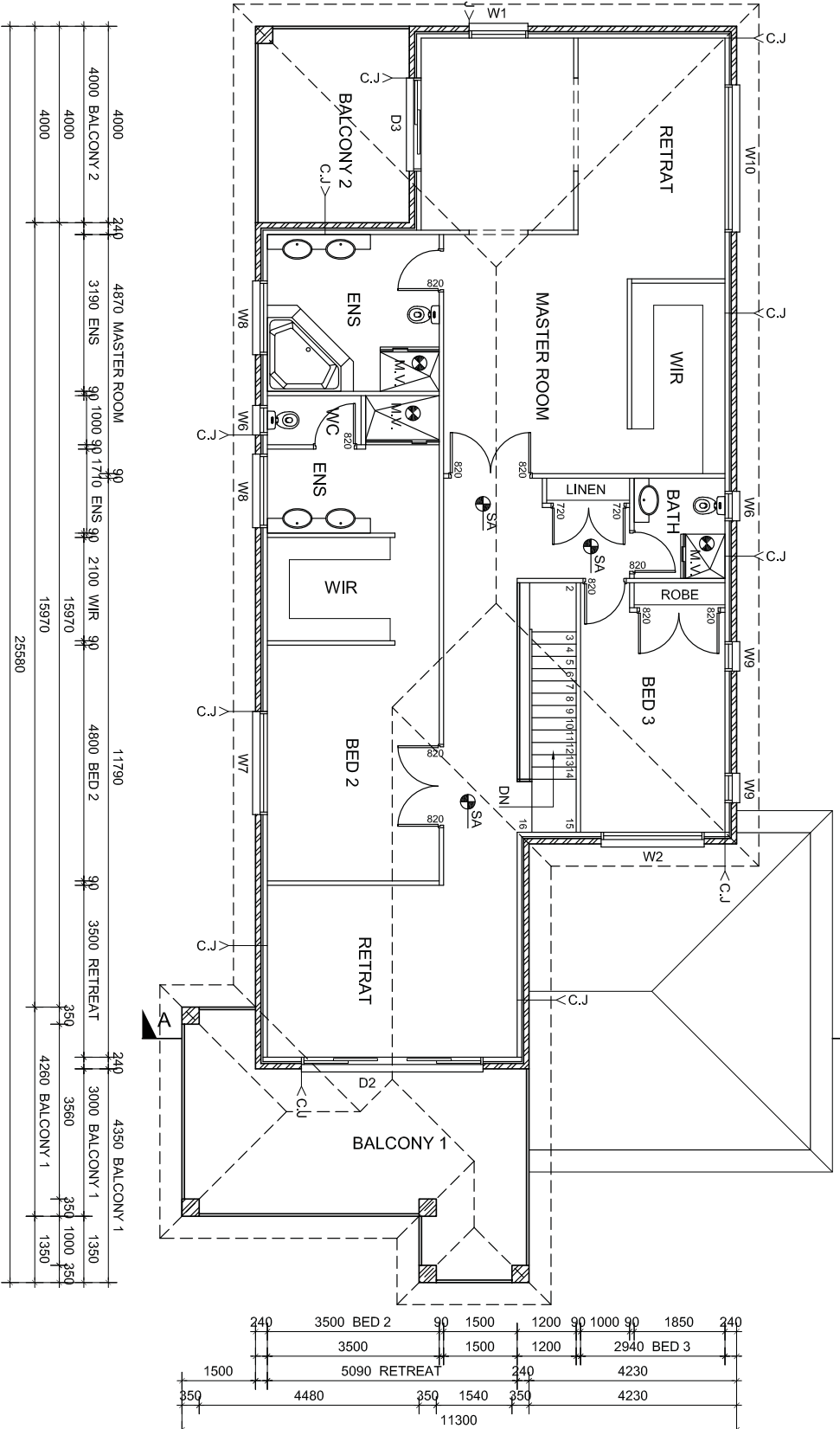
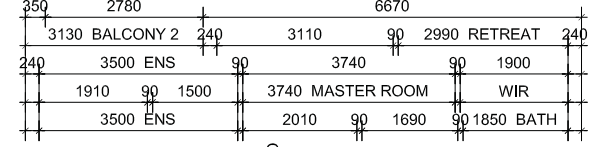


**NOTE:**  
DWELLING IS A 5 STAR ENERGY RATING COMPLIANCE REFER TO ENERGY RATING REPORT.

**NOTE:**  
ALL EXTERNAL EQUIPMENT AND FIXTURES TO BE SCREENED FROM PUBLIC VIEW



**FIRST FLOOR PLAN 1:100**

WINDOW & DOOR SCHEDULE	
W1	900W X 1800H ALUMINIUM FRAMED AWNING WINDOW
W2	2100W X 900H ALUMINIUM FRAMED AWNING WINDOW
W6	2100W X 1200H ALUMINIUM FRAMED AWNING WINDOW
W7	2100W X 1200H ALUMINIUM FRAMED AWNING WINDOW (OBSCURE GLASS)
W8	1500W X 600H ALUMINIUM FRAMED AWNING WINDOW (OBSCURE GLASS)
W9	600W X 1800H ALUMINIUM FRAMED AWNING WINDOW
W10	3000W X 600H ALUMINIUM FRAMED AWNING WINDOW
D2	3700W X 2100H ALUMINIUM FRAMED SLIDING DOOR
D3	1900W X 2100H ALUMINIUM FRAMED SLIDING DOOR

- NOTES:**
- WINDOW SCHEDULE TO BE READ IN CONJUNCTION WITH ELEVATIONS & ENERGY RATING REPORT.
  - ALL WINDOWS HEAD HEIGHT TO BE 2100mm ABOVE F.F.L UNLESS OTHERWISE NOTED.
  - ALL GLAZING SHALL BE CARRIED OUT IN ACCORDANCE WITH AS 1288 - 1994 GLASS INSTALLATION CODE & THE B.C.A.
  - BUILDER TO CONFIRM WINDOW SIZES WITH WINDOW MANUFACTURER PRIOR TO ORDERING & INSTALLATION.
  - WHERE BRICKWORK EXTENDS OVER OPENING PROVIDE WEEPHOLES AT 960mm MAX. CTRS. WITH CONTINUOUS FLASHING (TYPICAL).
  - ALL LINTELS ARE TO BE INSTALLED IN ACC. WITH AS 1684.

- NOTES:**
- BUILDER SHALL VERIFY ALL DIMENSIONS & LEVELS ON SITE PRIOR TO COMMENCEMENT OF ANY WORKS.
  - THESE DRAWINGS ARE TO BE READ IN CONJUNCTION WITH ENGINEERING DRAWINGS FOR ALL LOCATION OF BEAMS, LINTELS & ETC.
  - ALL DOWNPIPES ARE NOT SHOWN IN FLOOR PLAN, REFER TO SITE PLAN FOR LOCATIONS & DISCHARGE POINT.
  - TOILET DOORS TO COMPLY WITH B.C.A. 3.3.3.3 TO OPEN OUTWARDS, SLIDE OR BE REMOVABLE FROM THE OUTSIDE IF LESS THAN 12m. BETWEEN THE PAN & DOOR FRAME.

**LEGEND**

SA	SMOKE DETECTORS TO BE HARD WIRED TO THE ELECTRICAL MAIN SYSTEM
M.V.	ALL MECHANICAL VENTILATION TO BE 2006 MIN. FAN & TO EXTRACT TO USE/SEC. MIN. DUCTED TO EXTERNAL AIR.
C.J.	BRICK CONTROL JOINTS AT 6mm MAX CENTRES. ALL CONTROL JOINTS TO CONFORM WITH ONE OF THE CEMENT & CONCRETE ASSOCIATION