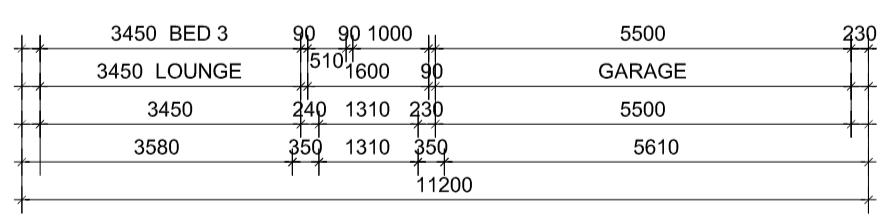
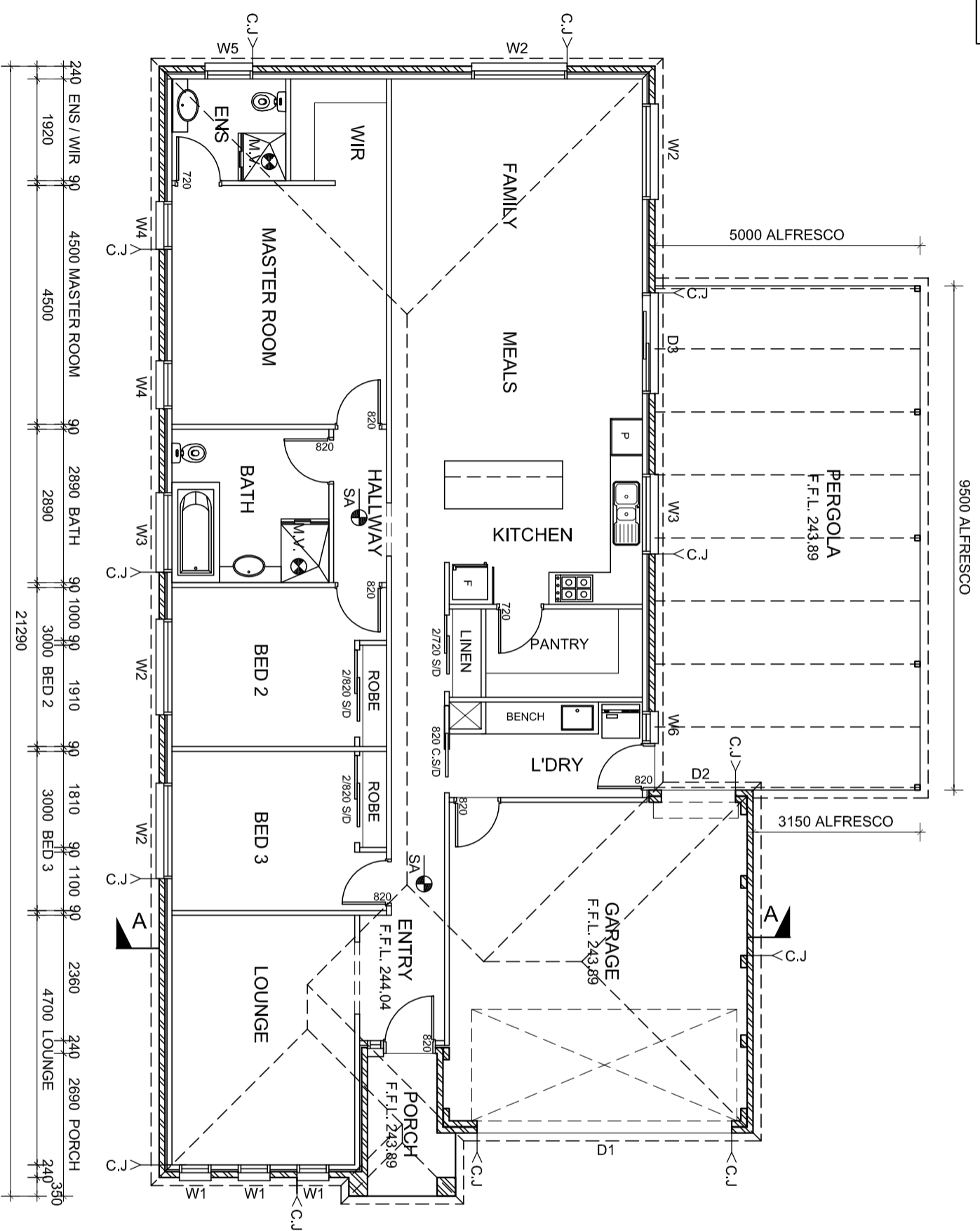
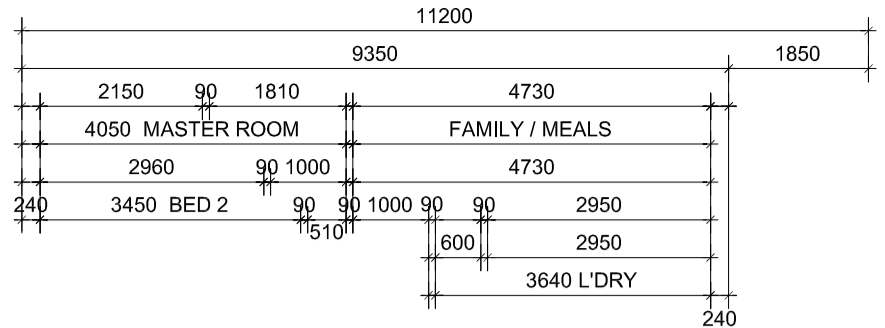
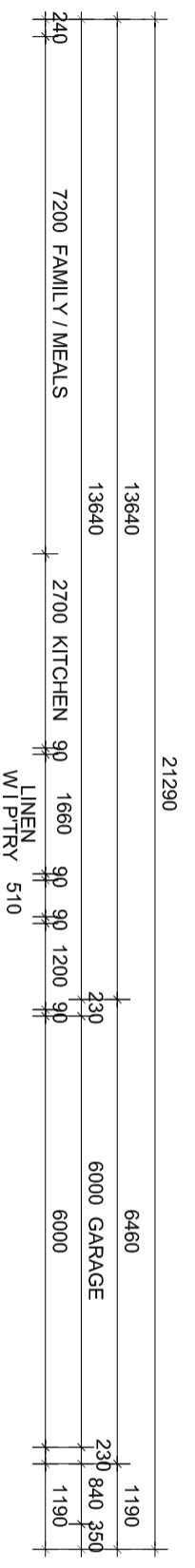


**NOTE:**  
ALL EXTERNAL EQUIPMENT AND FIXTURES TO BE SCREENED FROM PUBLIC VIEW

**NOTE:**  
DWELLING IS A 5 STAR ENERGY RATING COMPLIANCE REFER TO ENERGY RATING REPORT.



WINDOW & DOOR SCHEDULE	
W1	600W X 1800H ALUMINUM FRAMED AWNING WINDOW
W2	1800W X 1200H ALUMINUM FRAMED SLIDING WINDOW
W3	1500W X 900H ALUMINUM FRAMED SLIDING WINDOW (OBSCURE GLASS)
W4	900W X 1800H ALUMINUM FRAMED AWNING WINDOW
W5	900W X 900H ALUMINUM FRAMED SLIDING WINDOW (OBSCURE GLASS)
W6	600W X 900H ALUMINUM FRAMED AWNING WINDOW
D1	4800W x 2100H GARAGE PANEL LIFT DOOR (as selected)
D2	1400W x 2100H GARAGE ROLLER DOOR (as selected)
D3	1900W x 2100H ALUMINUM FRAMED SLIDING DOOR

- NOTES:**
- WINDOW SCHEDULE TO BE READ IN CONJUNCTION WITH ELEVATIONS & ENERGY RATING REPORT.
  - ALL WINDOWS HEAD HEIGHT TO BE 2100mm ABOVE F.F.L UNLESS OTHERWISE NOTED.
  - ALL GLAZING SHALL BE CARRIED OUT IN ACCORDANCE WITH AS 1288 - 1994 GLASS INSTALLATION CODE & THE B.C.A.
  - BUILDER TO CONFIRM WINDOW SIZES WITH WINDOW MANUF.C. PRIOR TO ORDERING & INSTALLATION.
  - WHERE BRICKWORK EXTENDS OVER OPENING PROVIDE WEEPHOLES AT 960mm MAX. CTRS. WITH CONTINUOUS FLASHING (TYPICAL).
  - ALL LINTELS ARE TO BE INSTALLED IN ACC. WITH AS. 1684.

- NOTES:**
- BUILDER SHALL VERIFY ALL DIMENSIONS & LEVELS ON SITE PRIOR TO COMMENCEMENT OF ANY WORKS.
  - THESE DRAWINGS ARE TO BE READ IN CONJUNCTION WITH ENGINEERING DRAWINGS FOR ALL LOCATION OF BEAMS, LINTELS & ETC.
  - ALL DOWNPIPES ARE NOT SHOWN IN FLOOR PLAN. REFER TO SITE PLAN FOR LOCATIONS & DISCHARGE POINT.
  - TOLLETT DOORS TO COMPLY WITH B.C.A. 3.8.3.3 TO OPEN OUTWARDS. SLIDE OR BE REMOVABLE FROM THE OUTSIDE IF LESS THAN 1.2m. BETWEEN THE PAN & DOOR FRAME.

**LEGEND**

M.V.	ALL MECHANICAL VENTILATION TO BE 200Ø MIN. FAN & TO EXTRACT 10 L/SEC. MIN. DUCTED TO EXTERNAL AIR.
SA	SMOKE DETECTORS TO BE HARD WIRED TO THE ELECTRICAL MAIN SYSTEM
C.J.	BRICK CONTROL JOINTS AT 6.0m MAX CENTRES. ALL CONTROL JOINTS TO CONFIRM WITH ONE OF THE CEMENT & CONCRETE ASSOCIATION

**GROUND FLOOR PLAN 1:100**