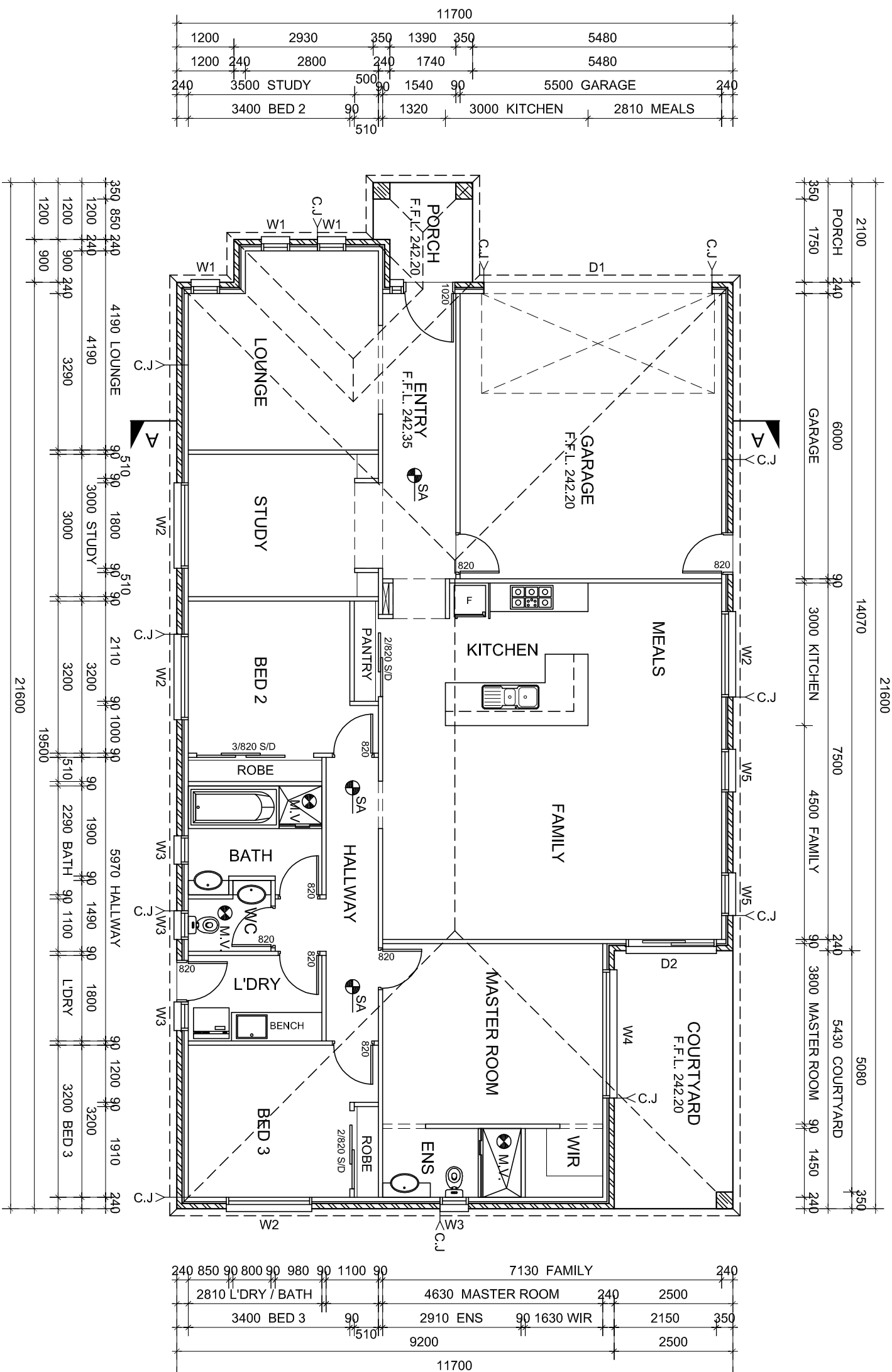


NOTE:
DWELLING IS A 5 STAR ENERGY RATING COMPLIANCE REFER TO ENERGY RATING REPORT.

NOTE:
ALL EXTERNAL EQUIPMENT AND FIXTURES TO BE SCREENED FROM PUBLIC VIEW



WINDOW & DOOR SCHEDULE

W1	600W X 1800H ALUMINIUM FRAMED AWNING WINDOW
W2	1800W X 1200H ALUMINIUM FRAMED SLIDING WINDOW
W3	600W X 900H ALUMINIUM FRAMED AWNING WINDOW (OBSCURE GLASS)
W4	2700W X 600H ALUMINIUM FRAMED SLIDING WINDOW
W5	900W X 1800H ALUMINIUM FRAMED SLIDING WINDOW
D1	4800W X 2400H GARAGE PANEL LIFT DOOR AS SELECTED
D2	1900W X 2100H ALUMINIUM FRAMED SLIDING DOOR

NOTES:

- WINDOW SCHEDULE TO BE READ IN CONJUNCTION WITH ELEVATIONS & ENERGY RATING REPORT. DO NOT SCALE WINDOWS REFER TO WINDOW & DOOR SCHEDULE.
- ALL WINDOWS HEAD HEIGHT TO BE 2100mm ABOVE F.F.L UNLESS OTHERWISE NOTED.
- ALL GLAZING SHALL BE CARRIED OUT IN ACCORDANCE WITH AS 1288 - 1994 GLASS INSTALLATION CODE & THE B.C.A.
- BUILDER TO CONFIRM WINDOW SIZES WITH WINDOW MANUF.C. PRIOR TO ORDERING & INSTALLATION.
- WHERE BRICKWORK EXTENDS OVER OPENING PROVIDE WEEPHOLES AT 960mm MAX. CTRS. WITH CONTINUOUS FLASHING (TYPICAL).
- ALL LINTELS ARE TO BE INSTALLED IN ACC. WITH AS. 1684.

NOTES:

- BUILDER SHALL VERIFY ALL DIMENSIONS & LEVELS ON SITE PRIOR TO COMMENCEMENT OF ANY WORKS.
- THESE DRAWINGS ARE TO BE READ IN CONJUNCTION WITH ENGINEERING DRAWINGS FOR ALL LOCATION OF BEAMS, LINTELS & ETC.
- ALL DOWNPIPES ARE NOT SHOWN IN FLOOR PLAN. REFER TO SITE PLAN FOR LOCATIONS & DISCHARGE POINT.
- TOLLET DOORS TO COMPLY WITH B.C.A. 3.8.3.3 TO OPEN OUTWARDS. SLIDE OR BE REMOVABLE FROM THE OUTSIDE IF LESS THAN 1.2m. BETWEEN THE PAN & DOOR FRAME.

LEGEND

M.V.	ALL MECHANICAL VENTILATION TO BE 20002 MIN. FAN & TO EXTRACT 10 L/SEC. MIN. DUCTED TO EXTERNAL AIR.
SA	SMOKE DETECTORS TO BE HARD WIRED TO THE ELECTRICAL MAIN SYSTEM
<C.J.	BRICK CONTROL JOINTS AT 6.0m MAX CENTRES. ALL CONTROL JOINTS TO CONFIRM WITH CN9 OF THE CEMENT & CONCRETE ASSOCIATION

GROUND FLOOR PLAN 1:100