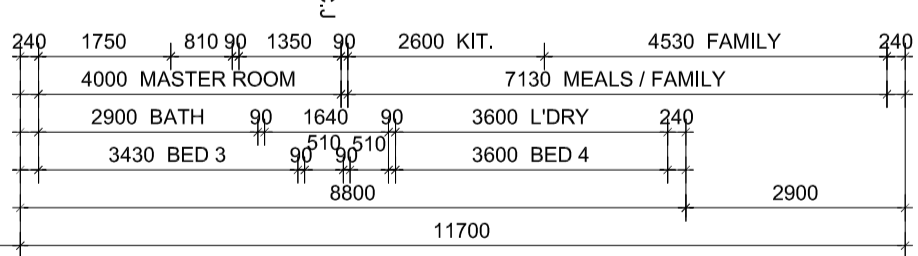
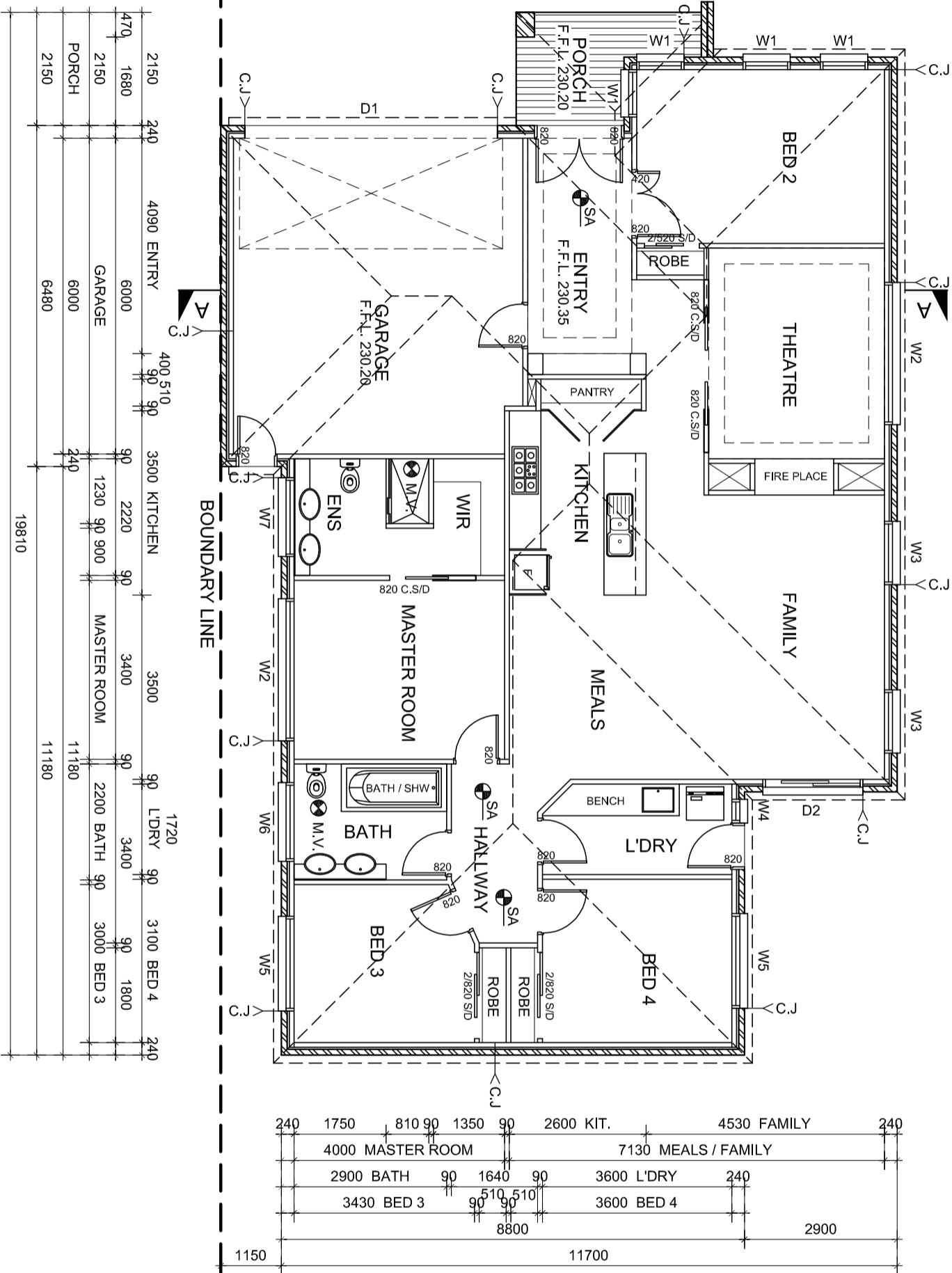
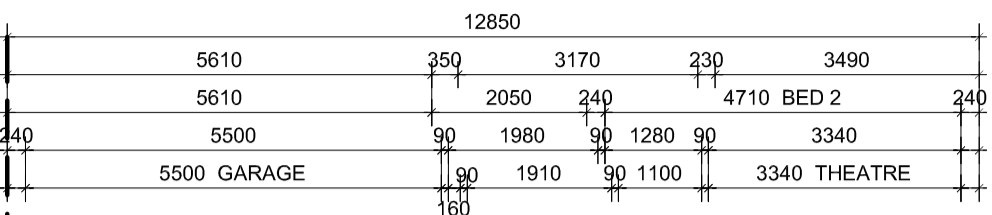
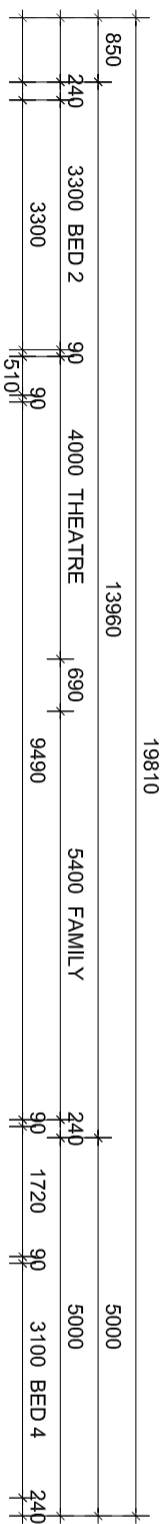


NOTE:

DWELLING IS A 5 STAR ENERGY RATING COMPLIANCE REFER TO ENERGY RATING REPORT.

NOTE:

ALL EXTERNAL EQUIPMENT AND FIXTURES TO BE SCREENED FROM PUBLIC VIEW

**WINDOW & DOOR SCHEDULE**

W1	900W X 1800H ALUMINUM FRAMED SLIDING WINDOW
W2	2700W X 600H ALUMINUM FRAMED SLIDING WINDOW
W3	1200W X 1800H ALUMINUM FRAMED SLIDING WINDOW
W4	450W X 900H ALUMINUM FRAMED AWNING WINDOW
W5	1800W X 1200H ALUMINUM FRAMED SLIDING WINDOW
W6	1500W X 900H ALUMINUM FRAMED SLIDING WINDOW (OBSCURE GLASS)
W7	1500W X 600H ALUMINUM FRAMED SLIDING WINDOW (OBSCURE GLASS)
D1	4800W x 2100H GARAGE PANEL LIFT DOOR (as selected)
D2	1900W x 2100H ALUMINUM FRAMED SLIDING DOOR

NOTES:

- WINDOW SCHEDULE TO BE READ IN CONJUNCTION WITH ELEVATIONS & ENERGY RATING REPORT.
- ALL WINDOWS HEAD HEIGHT TO BE 2100mm ABOVE F.F.L UNLESS OTHERWISE NOTED.
- ALL GLAZING SHALL BE CARRIED OUT IN ACCORDANCE WITH AS 1288 - 1994 GLASS INSTALLATION CODE & THE B.C.A.
- BUILDER TO CONFIRM WINDOW SIZES WITH WINDOW MANUF.C. PRIOR TO ORDERING & INSTALLATION.
- WHERE BRICKWORK EXTENDS OVER OPENING PROVIDE WEEPHOLES AT 960mm MAX. CTRS. WITH CONTINUOUS FLASHING (TYPICAL).
- ALL LINTELS ARE TO BE INSTALLED IN ACC. WITH AS. 1684.

NOTES:

- BUILDER SHALL VERIFY ALL DIMENSIONS & LEVELS ON SITE PRIOR TO COMMENCEMENT OF ANY WORKS.
- THESE DRAWINGS ARE TO BE READ IN CONJUNCTION WITH ENGINEERING DRAWINGS FOR ALL LOCATION OF BEAMS, LINTELS & ETC.
- ALL DOWNPIPES ARE NOT SHOWN IN FLOOR PLAN. REFER TO SITE PLAN FOR LOCATIONS & DISCHARGE POINT.
- TOILET DOORS TO COMPLY WITH B.C.A. 3.8.3.3 TO OPEN OUTWARDS. SLIDE OR BE REMOVABLE FROM THE OUTSIDE IF LESS THAN 1.2m. BETWEEN THE PAN & DOOR FRAME.

LEGEND

	ALL MECHANICAL VENTILATION TO BE 2000 ² MIN. FAN & TO EXTRACT 10 L/SEC. MIN. DUCTED TO EXTERNAL AIR.
	SMOKE DETECTORS TO BE HARD WIRED TO THE ELECTRICAL MAIN SYSTEM
	BRICK CONTROL JOINTS AT 6.0m MAX CENTRES. ALL CONTROL JOINTS TO CONFIRM WITH CN9 OF THE CEMENT & CONCRETE ASSOCIATION

GROUND FLOOR PLAN 1:100